


CS-M1V Cloning software HELP

Table of contents

IMPORTANT	3
Introduction	3
Top Menu Function	4
File (F)	5
File (F) Menu	5
Edit (E)	6
Edit Memory Channel	6
Edit Free Channel	9
Edit WXCH	10
Common Setting	11
Common	11
ATIS Code	15
Expert	16
Toolbar	19

IMPORTANT

When first using this software:

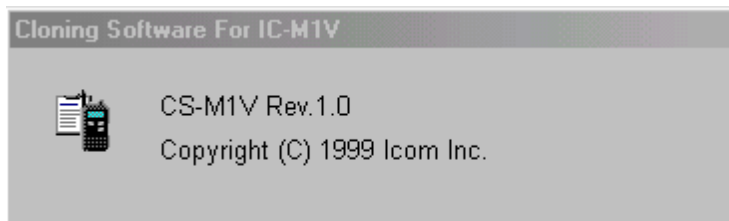
Push  to read all transceiver cloning data into the PC before starting to edit with this cloning software.

Otherwise the cloning data may not be cloned correctly in to the transceiver.
(e.g. Frequency/Memory CH setting, channel Comments, etc.)



Created with the Personal Edition of HelpNDoc: [Easily create EBooks](#)

Introduction



CS-M1V cloning software is designed to perform data setting and cloning for IC-M1V MARINE FM Transceiver.

Launching the CS-M1V Cloning software:

(Using Windows 95/98)

1. Before launching the program make sure the transceiver power is turned on.
2. Click the [Start] button and then point to [Programs].
3. Point to the CS-M1V folder.
4. Click the CS-M1V program.

NOTE:

- ♦ If the "Communication failed" dialog box appears while the program is paused and the transceiver power is on, activate the program again.
- ♦ If the problem persists, check the connection between the computer and transceiver as well as the RS-232C port.

Related items:

- Confirming the RS-232C port
- Changing the RS-232C port

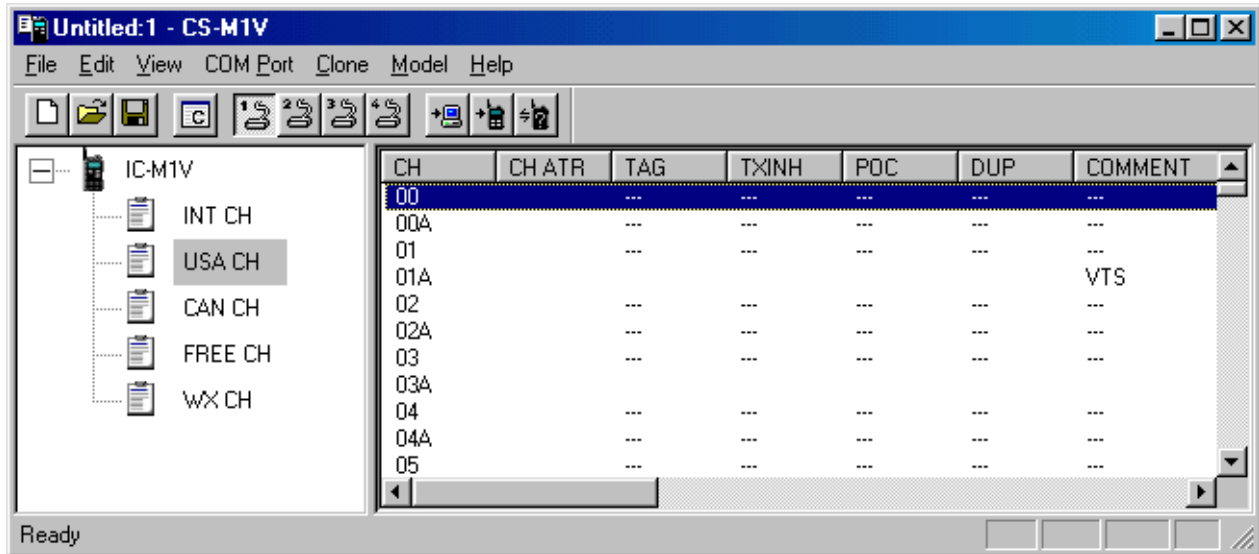
Quitting the CS-M1V program:

Select [Exit (X)] in the [File (F)] menu or click the [Close] button in the tool bar.

Windows 95/98 are Microsoft trademarks.

Created with the Personal Edition of HelpNDoc: [Easily create EBooks](#)

Top Menu Function



There are 6 top menu functions and a channel List displayed on the opening page.

♦ File (F)

- File Menu

♦ Edit (E)

- Edit Memory ch

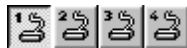
♦ View (V)

- **Common Setting (C)**

Common, ATIS Code, Expert are available.

- **Toolbar**

♦ COM Port (P)






Selects one of COM port numbers 1 to 4.

♦ Clone (C)

Connect the transceiver with the following optional cloning cables for reading or writing data between the transceiver and PC.

Optional OPC-922 is required.

-  Read <- TR Reads the data from the transceiver.
-  Write -> TR Writes the data to the transceiver.
-  Information "Information" allows you to read the connected transceiver type, installed option(s) as well as any programmed comments (set in the Common screen), etc.

♦ Model (M)



Select the model which you are going to clone. USA, UK, FRANCE and HOLLAND are available.

♦ Help (H)

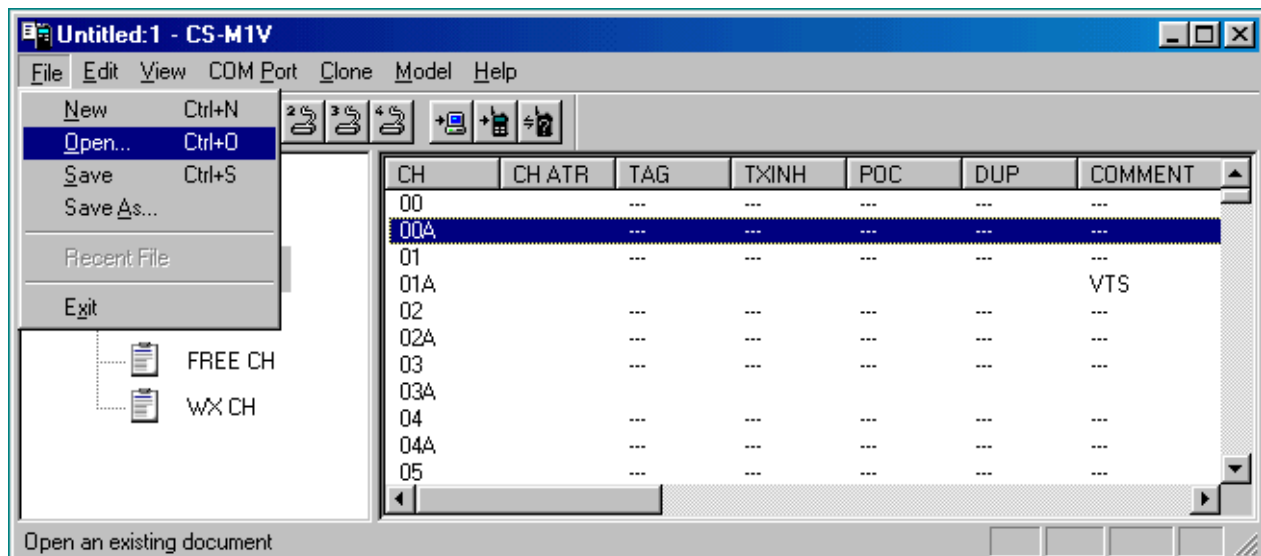
Push Help (H) then push About CS-M1V to display the software revision number.




Created with the Personal Edition of HelpNDoc: [Free Kindle producer](#)

File (F)

Created with the Personal Edition of HelpNDoc: [Free Web Help generator](#)

File (F) Menu



- ♦  **New (N) Ctrl+N** Creates a new file.
- ♦  **Open (O) Ctrl+O** Loads an ICF (Icom Cloning Format) file.
- ♦  **Save (S) Ctrl+S** Saves the current file, if you haven't previously saved the file. Type a name for the file in the File Name box.
- ♦ **Save As (A)** Saves a file with a different name or format.
- ♦ **Recent File** Lists the latest files.
- ♦ **Exit (X)** Quits this program.

When saving an ICF file, any cloning comment specified in the Common screen is also saved in the file for future reference.

Created with the Personal Edition of HelpNDoc: [Easy EPub and documentation editor](#)

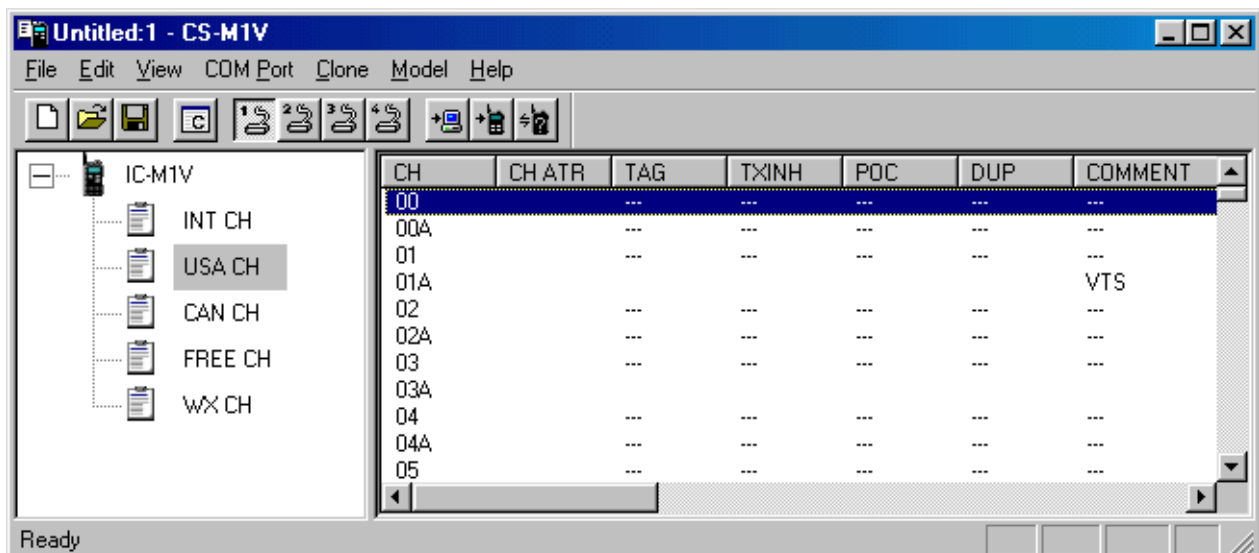
Edit (E)

[Edit Free Channel](#)

[Edit WXCH](#)

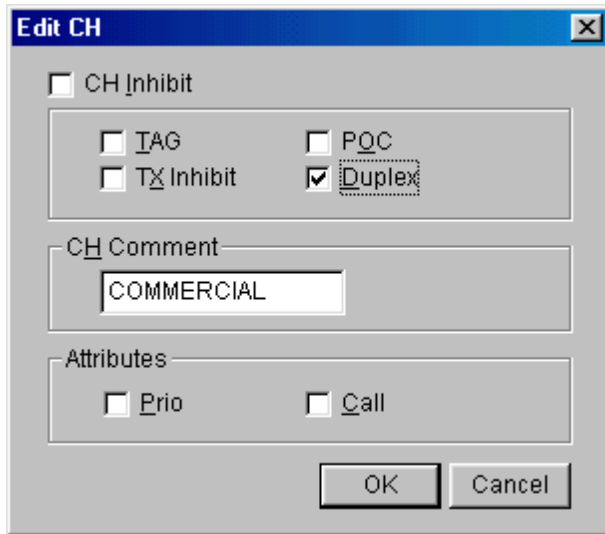
Created with the Personal Edition of HelpNDoc: [Full-featured EBook editor](#)

Edit Memory Channel



The "Edit Memory ch" window allows you to edit the international (INT), USA or Canadian (CAN) channel information directory.

Edit the memory channel information



1. Double-click the desired memory channel number or data area where you want to enter the channel information.
2. "Edit CH" window appears as above.
3. Edit the item.

♦ Channel Inhibit

Channels can be specified as "Appear" or "Disappear (inhibit)". "Inhibit" channels do not appear in the transceiver.

"CH Inhibit" channels can be masked from this channel screen when the "Usable CH List" is selected.

♦ TAG

For selecting channels to be scanned during scan. This setting can also be performed using the transceiver's front panel.

1. Click the check-box to toggle the tag channel setting.
 - "TAG" appears when tag is specified and no indicator appears when tag is canceled.
 - Set the "CH Inhibit" item as "Appear" in advance.

♦ TX Inhibit

For setting the transmit inhibit function. The selected channel is receive only; transmit is inhibited.

1. Click the check-box to toggle the transmit inhibit function ON and OFF.
 - "INH" appears when transmit inhibit is specified and no indicator appears when transmit inhibit is canceled.
 - Set the "CH Inhibit" item as "Appear" in advance.

NOTE: Channel 70 is used for DSC operation only and must be set as transmit inhibit expect for the Holland version.

This setting does not affect DSC transmissions.

◆ POC

For setting the POC (function. The high/low power selection is disabled and only low power can be used on the selected channel.

1. Click the check-box toggle the POC function ON and OFF.
 - "POC" appears when low power is specified and no indicator appears when power selection is enabled.
 - Set the "CH Inhibit" item as "Appear" in advance.

◆ Duplex

Duplex channels can be set as simplex channels except for free channels.

For free channels, set the receive and transmit frequencies directly in the FREE CH screen.

1. Click the check-box to select duplex or simplex.
 - "DUP" appears when duplex is specified and no indicator appears when simplex is specified.
 - "---" appears when "A" channels (e.g. channel 88A) are selected. In this case, a duplex setting cannot be specified.
 - Set the "CH Inhibit" item as "Appear" in advance.

◆ Channel Comment

LCD display indicators (digit indicators) are used for channel names, therefore the usable characters are restricted.

- Usable characters: 0 to 9, A b C c d E F G H i J L n o P r t U u y - and Space
- Capital or small letters change to indicatable letters except for "C" and "U" when the [OK] key is pushed.

Attributes

For setting the channel attributes. The priority channel and call channel are specified in this column.

The priority channel is selected when the [16] key is pushed and the call channel is selected when the [9] (or [C]) is pushed.

NOTE: The USA CH and/or CANADA CH screen can be selected (edited) only when "USA" and/or "CANADA" is selected in the USABLE CH GROUP item of the COMMON screen, respectively.

(1) Appear/disappear setting

Push the [Space] key to toggle "Appear" or "Disappear."

- For "Disappear" channels, 4 dimmed bars appear in the TAG, TX INH, POC or DUP columns.
- When "Usable CH List" is previously selected, the displayed channels are already set as "Appear" and cannot be specified as "Disappear". Select "Total CH List" in this case. (Push [Enter] then [Enter] again to select "Total CH List.")

◆ Priority/ Call

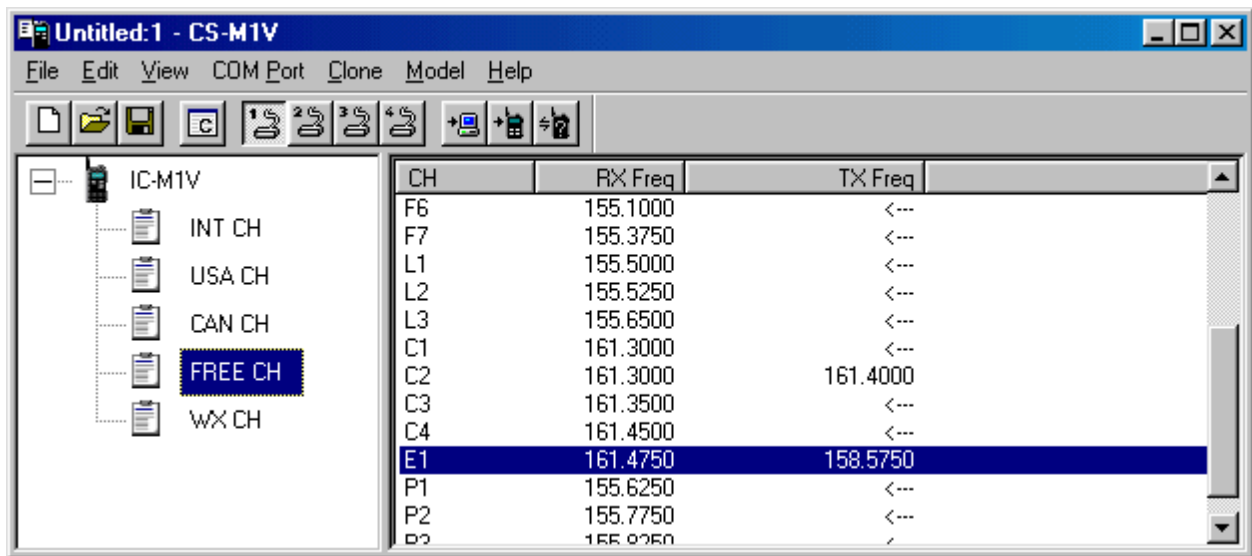
The priority channel and call channel are also specified in this column.

The priority channel is selected when the [16] key is pushed and the call channel is selected when the [9] (or [C]) is pushed.

NOTE: The USA CH and/or CANADA CH screen can be selected (edited) only when "USA" and/or "CANADA" is selected in the USABLE CH GROUP item of the COMMON screen, respectively.

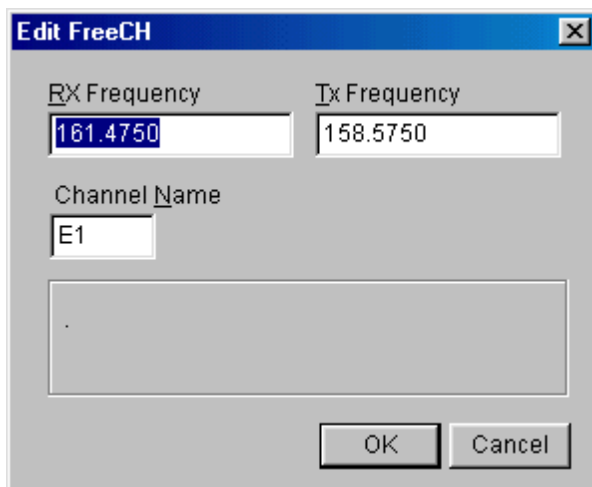
Created with the Personal Edition of HelpNDoc: [Full-featured multi-format Help generator](#)

Edit Free Channel



The "Edit Free ch" window allows you to edit the 22 free channel information directory.

Edit Free channel information



1. Double-click the desired Free channel name or data area where you want to enter the channel information.
2. "Edit CH" window appears as above.

Receive (RX) and Transmit (TX) Frequencies

The transceiver has 22 preset and programmable free channels.

This screen is used for frequency setting only. To use the free channels, set desired channels to "Appear" on a channel screen such as the INT CH screen.

For setting the receive and transmit frequencies of the free channels. Enter receive or transmit frequencies starting from the 100 MHz digit.

1. Enter the desired receive or transmit frequency directly.

- Usable frequency coverage:

RX 156.000 to 163.000 MHz

TX 156.000 to 157.500 MHz

(0.00625 MHz steps only)

NOTE: "< - -" in the transmit column indicates that the receive and transmit frequencies are the same.

NOTE: Even though out-of-range frequencies can be set, the transceiver may not accept such frequencies.

Free Channel Name

LCD display indicators (digit indicators) are used for channel names, therefore the usable characters are restricted.

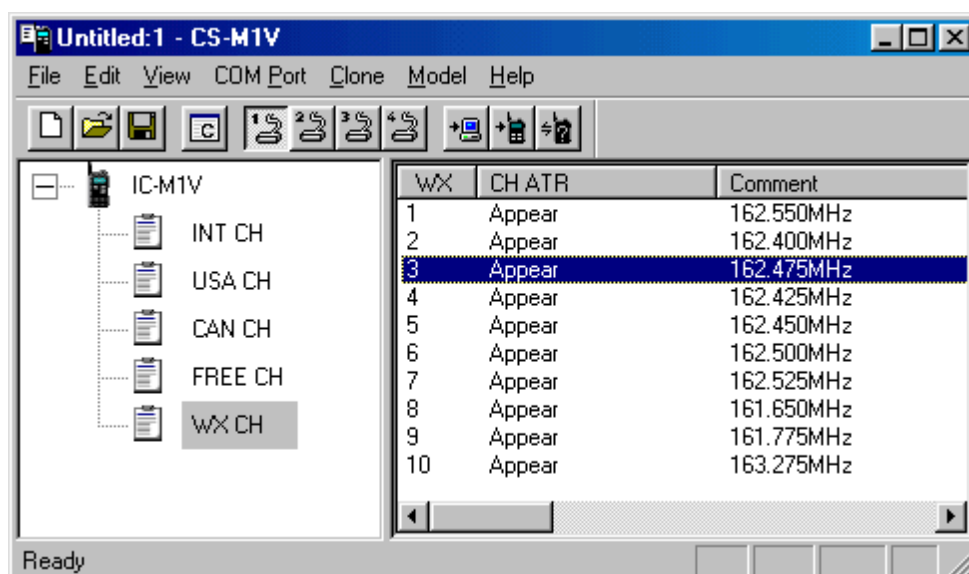
- Usable characters: 0 to 9, A b C c d E F G H i J L n o P r t U u y - and Space

- Capital or small letters change to indicatable letters except for "C" and "U" when the [OK] key is pushed.

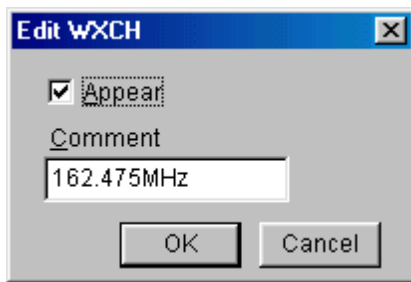
- The 3rd character is A or b only.

Created with the Personal Edition of HelpNDoc: [Easily create HTML Help documents](#)

Edit WXCH



The "Edit WXCH" window allows you to edit the WX channel information directory.



Edit the WX channel information

1. Double-click the desired WX channel number or data area where you want to enter the channel information.
2. "Edit CH" window appears as above.
3. Editing items:

♦ Appear

For setting the channel attributes. Channels can be specified as "Appear" or "Disappear". When check-box is clicked, the selected channel does not appear in the transceiver.

♦ Comment

LCD display indicators (digit indicators) are used for channel names, therefore the usable characters are restricted.

- Usable characters: 0 to 9, A b C c d E F G H i J L n o P r t U u y - and Space
- Capital or small letters change to indicatable letters except for "C" and "U" when the [OK] key is pushed.

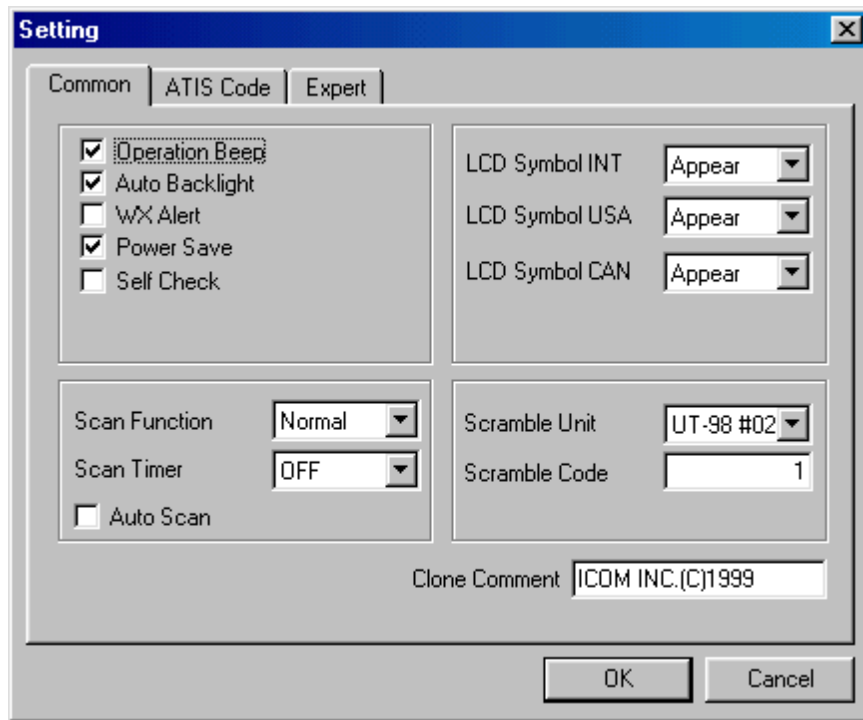
Created with the Personal Edition of HelpNDoc: [Free Web Help generator](#)

Common Setting

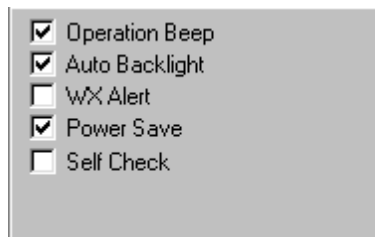
ATIS Code
Expert

Created with the Personal Edition of HelpNDoc: [Easily create Web Help sites](#)

Common



These settings can be set in the transceiver's set mode and display set mode.



◆ Operation Beep

Confirmation beep tones generally sound when you push a key or switch. These can be turned ON (default) or OFF to your preference. For setting confirmation beeps when a switch is pushed. You can program the transceiver for silent operation or to have confirmation beeps sound. This setting can be set in the transceiver's set mode.

◆ Auto Backlight

This function is convenient for nighttime operation. The automatic backlighting turns the backlighting ON when pushing any key except for [PTT].

- The backlighting is automatically turned OFF after 5 sec. of inactivity.

◆ WX Alert

For setting the weather alert function. The transceiver can detect the 1050 Hz weather alert tone on a weather channel or on the previously selected weather channel while scanning. This setting can be set in the transceiver's set mode (when the WX ALERT item in the Expert section is set to "Appear.")

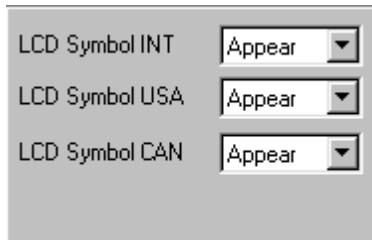
◆ Power Save

The power save function reduces current drain by deactivating the receiver circuit for preset intervals.

This setting can be set in the transceiver's set mode, when the Power Save Function item in the Expert section is set to "Appear".

◆ Self Check

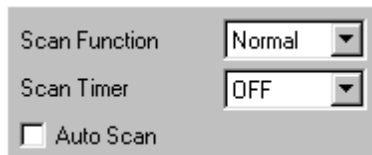
Click the check-box to turn the "Self check function" ON.



◆ LCD Symbol INT/ USA/ CAN

For setting the INT, U.S.A. or CAN channel indicator ON (Appear), OFF (Disappear) or ATIS when selecting a channel.

1. Click the pull down menu then select the desired mode.



◆ Scan Function

For setting the scan function to priority, normal or OFF.

Priority scan monitors channel 16 (priority channel) while searching all tag channels in sequence. Normal scan searches all tag channels in the selected channel group (USA, INT, CANADA) in sequence.

Scan type (priority or normal scan) can be set in the transceiver's set mode (when the SCAN FUNCTION item in the EXPERT section is set to Appear").

- Click the pull down menu to indicate the setting window, then make a selection.

Priority: Monitors channel 16 (priority channel) while searching all tag channels in sequence.

Normal: Searches all tag channels in the selected channel group (USA, INT, CANADA) in sequence.

OFF: Scan function cannot be used.

◆ Scan Timer

For setting the scan resume timer ON or OFF. This setting can be set in the transceiver's set mode (when the SCAN TIMER item in the EXPERT section is set to "Appear").

NOTE: This setting is valid when the **SCAN FUNCTION** item in the **COMMON** section is set to **priority** or **normal**.

Click the pull down menu to turn the scan resume timer **ON** or **OFF**.

ON : Scan pauses for 5 sec. on a received signal and then resumes.

OFF: Scan pauses on a received signal until it disappears.

♦ Auto Scan

Confirmation beep tones generally sound when you push a volume Up/ Down key. These can be turned **ON** (default) or **OFF** to you reference.

Scramble Unit	UT-98 #02
Scramble Code	1

♦ Scramble unit

Push to select the installed scrambler unit name. Selectable value : **UT-112** or **UT-98 #02**

♦ Scramble Code

Push to select the scrambler code number. Selectable value;

UT-98 #02 : 0 to 127

UT-112 : 1 to 32

Clone Comment	ICOM INC.(C)1999
---------------	------------------

♦ Clone Comment

For programming a clone comment of up to 16 digits for reference purposes.

When you connect a transceiver to a PC using the OPC-478 cloning cable with OPC-922 cable adapter, you can check the transceiver's comment by selecting "Information" in the **CLONE** menu.

Also, this comment is used as a header in data files when selecting the data files to be loaded.

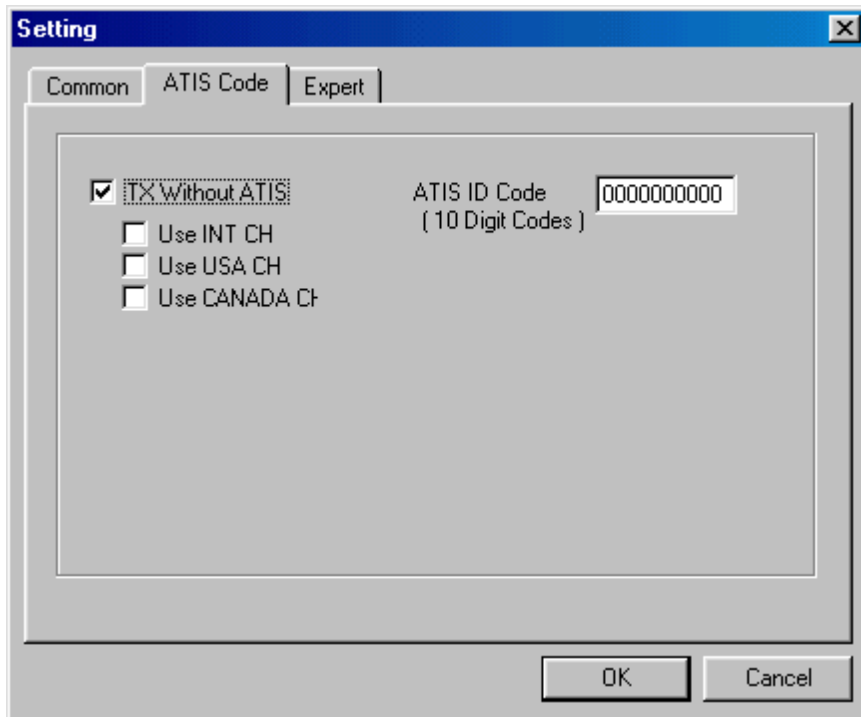
Enter the desired comment directly.

- Usable character; Any character

[To ATIS Code setting](#)

[To Expert setting](#)

ATIS Code



♦ TX without ATIS

A transmission can be inhibited when no ATIS code is programmed. If this setting is set to "Inhibit" without ATIS ID code programming, the transceiver can receive only.

- Click the pull down menu to key to accept or inhibit a transmission without ATIS code.

♦ Use INT CH

♦ Use USA CH

♦ Use CANADA CH

For specifying the ATIS function for each marine channel group, international, U.S.A. or Canadian.

- Click the check-box to turn the ATIS function ON or OFF for the selected marine channel.

ON: ATIS code is transmitted for the selected marine channel.

OFF: ATIS code is not transmitted for the selected marine channel.

♦ ATIS ID Code

For programming the authorized ATIS code of the transceiver. This programmed ATIS code is used for ATIS encode and decode.

IMPORTANT: If the wrong code is programmed in this item, the ATIS code will confuse other ships.

- Selectable value: 0000000000 to 9999999999

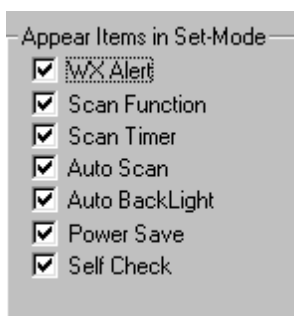
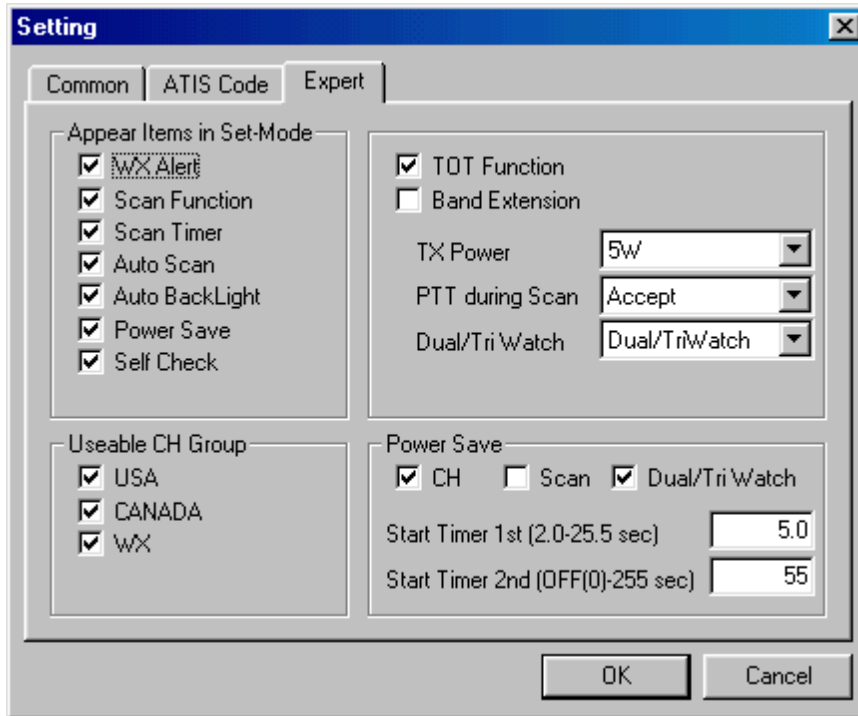
- Push [Space] to clear the ATIS code and turn the ATIS function OFF.

To Common setting

To Expert setting

Created with the Personal Edition of HelpNDoc: [Easily create EPub books](#)

Expert



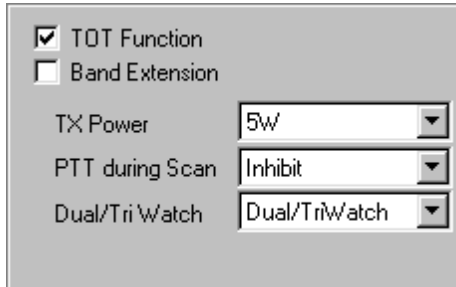
Appear items in Set-Mode

For setting the following items in the transceiver's set mode to "Appear" or "Disappear." When "Disappear" is selected, selected item does not appear and therefore cannot be set in the transceiver's set mode.

items;

- ◆ **WX Alert**
- ◆ **Scan Function**
- ◆ **Scan Timer**

- ◆ **Auto Scan**
- ◆ **Auto backlight**
- ◆ **Power Save**
- ◆ **Self Check**



◆ **TOT Function**

According to the FCC regulations, the transceiver cannot transmit more than 5 min. continuously.

The time-out timer stops any continuous transmission 5 min. after it starts. This function can only be set via this software.

- Click the check-box to turn the time-out timer ON or OFF.

◆ **Band Extension**

This item is used for private use only. Set to OFF for normal operation.

◆ **TX Power**

This item selects output power.

- Selectable value: 5 W or 1 W

◆ **PTT During Scan**

For setting the [PTT] function during dualwatch, tri-watch or scanning. When "Inhibit" is selected, transmission is inhibited during dualwatch, tri-watch or scan. The 1st push of the [PTT] switch cancels dualwatch, tri-watch or scan with a beep tone, then the target transceiver can transmit at the 2nd push. When "Accept" is selected, the [PTT] switch can transmit immediately.

- Click the check-box to accept or inhibit the PTT switch during scan.

◆ **Dual/Tri Watch**

For setting the transceiver's available watch functions to Dualwatch/Tri-watch, Dualwatch (Only) or OFF.

- Click the pull down menu to select the item.

OFF: Neither Dualwatch or Tri-watch are available.

Dualwatch: Dualwatch (Only) is available.

Dual/Tri-watch: Both Dualwatch and tri-watch are available.



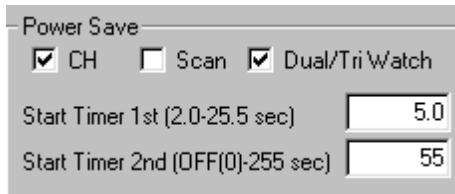
◆ Usable CH Group

The usable channel group can be changed in this item. After selecting the transceiver model in the MODEL screen, other models channel groups can be added or deleted.

- Push [Enter] to indicate the setting window, then make a selection.
- Selectable value: USA, CANADA and WX

NOTE:

1. International channels can be used even when "INT" is not displayed in this item.
2. As "USA" or "CAN" indicators can be turned OFF in previous items, the U.S.A. or Canadian channels can be used as memory channels by setting only specific channels to "appear."



Power Save

◆ CH

The power save function reduces current drain by deactivating the receiver circuit for preset intervals. (Normal Power save)

◆ Scan

The power save function is available when the scan function is set to ON.
The power save function is available during scan by decreasing the total scan speed.

◆ Dual/Tri Watch

The power save function is available when the Dual/Tri-watch function is set to ON.
Click the check-box to make the selection.

◆ Start Timer [1st]/[2nd]

For setting the power save start timers. When the power saver function is turned ON and while receiving no signal for this time period, the transceiver's internal circuit starts to toggle between the "idle" and "activate" condition, respectively.

Selectable time;

- The 1st timer: 2.0 - 25.5 sec.
- The 2nd timer: 0 - 255 sec.

NOTE: After the 1st timer period, the power saver function activates and then switches to long

power saver at the 2nd timer period. The 1st timer must be set smaller than the 2nd timer, otherwise the 1st timer does not activate.

[To Common setting](#)
[To ATIS Code setting](#)

Created with the Personal Edition of HelpNDoc: [Generate Kindle eBooks with ease](#)

Toolbar

Toolbar has 11 buttons.



Created with the Personal Edition of HelpNDoc: [Easily create CHM Help documents](#)
